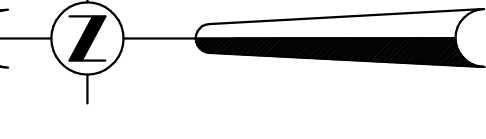
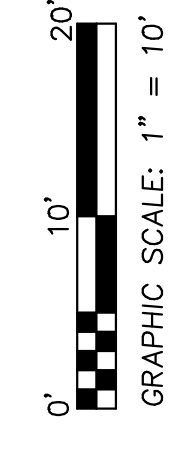
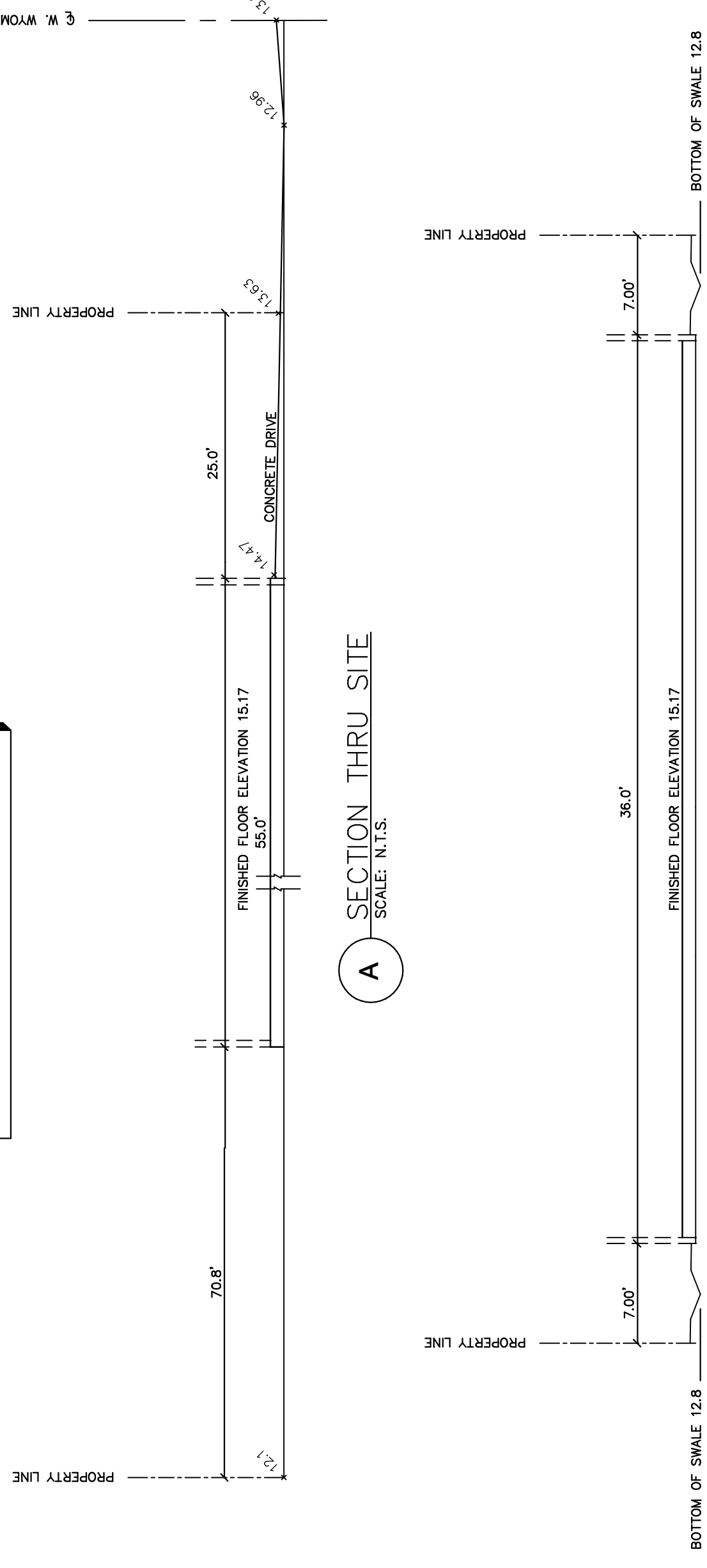


Boundary • Topographic • Environmental • Record • Mortgage • ALTA/ASCM Land Title

Boundary • Topographic • Environmental • Record • Mortgage • ALTA/ASCM Land Title

LOT AREA = 7,340 S.F.
 BUILDING FOOTPRINT = 1,170 S.F.
 DRIVEWAY FOOTPRINT = 214 S.F.
 GARAGE FOOTPRINT = 96 S.F.
 IMPERVIOUS CONC. DRIVEWAY = 430 S.F.
 IMPERVIOUS SURFACE RATIO (ISR) = 2,357 S.F. (32.02%)



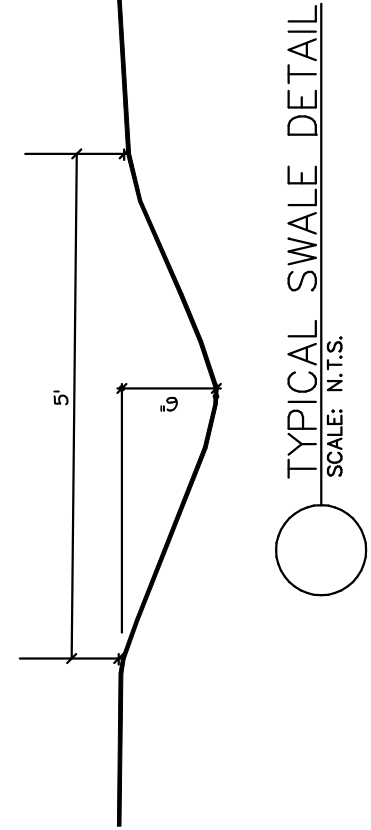
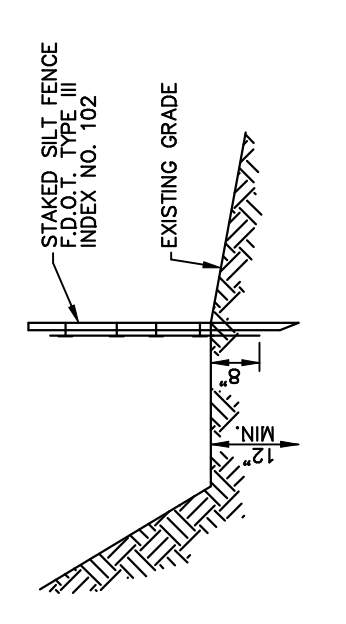
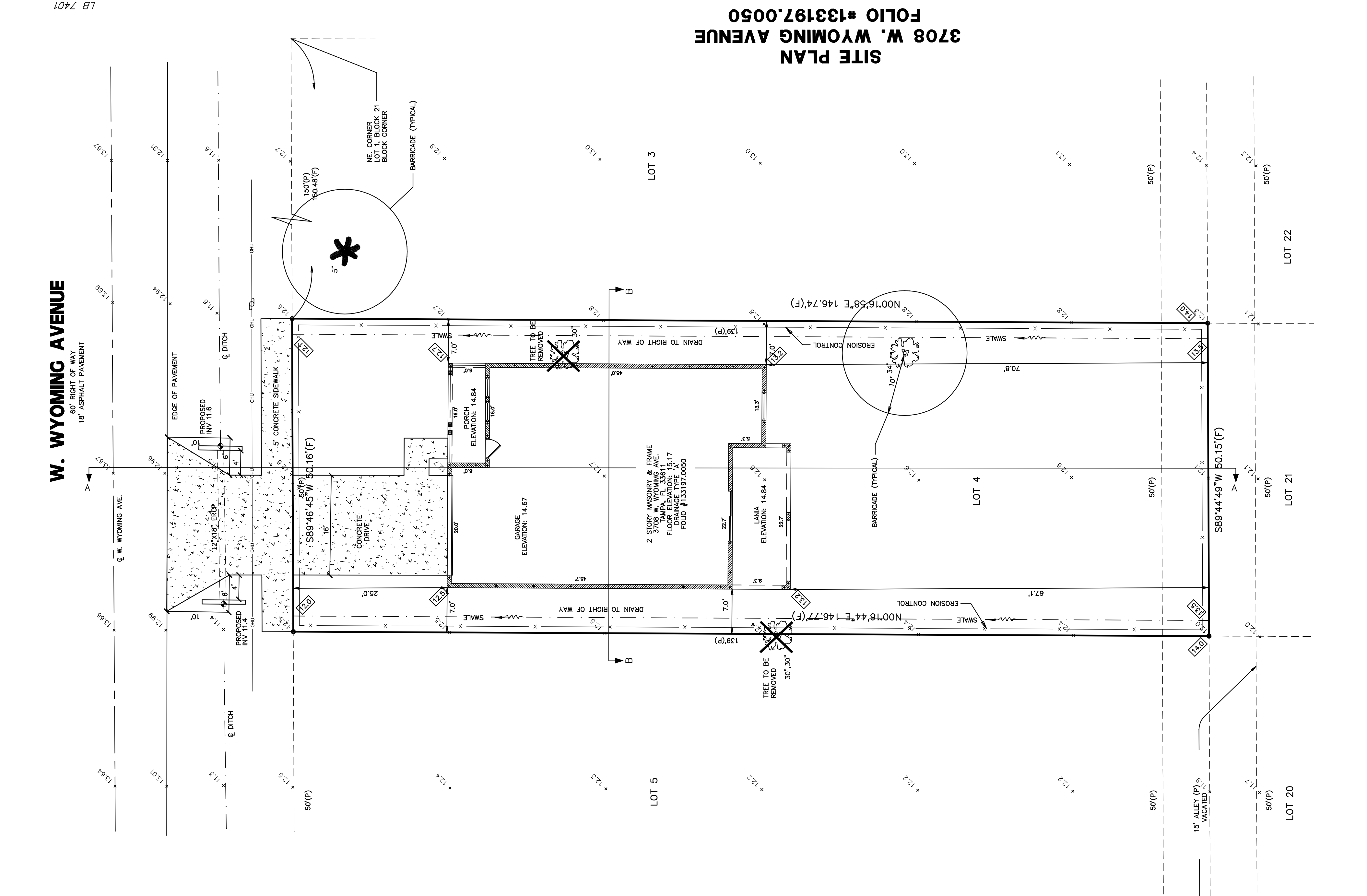
MONAWECK SURVEYING, INC.
 13210 TIFTON DRIVE
 TAMPA, FLORIDA 33618
 TELEPHONE (813) 240-8823
 FAX (813) 240-8823
 MONAWECKSURVEYING@GMAIL.COM

DATE	DESCRIPTION	DMG. BY

Job No.	17032.00
Sheet	1 OF 1
Date	6/18/18

Dwn By:	T.J.M.
Checked By:	T.J.M.
Scale:	1"=10'

Prepared For:
 ENVIRONMENTAL ASSESSMENTS & CONSULTING
 400 COREY AVENUE
 SUITE 200
 ST. PETERSBURG, FL 33708

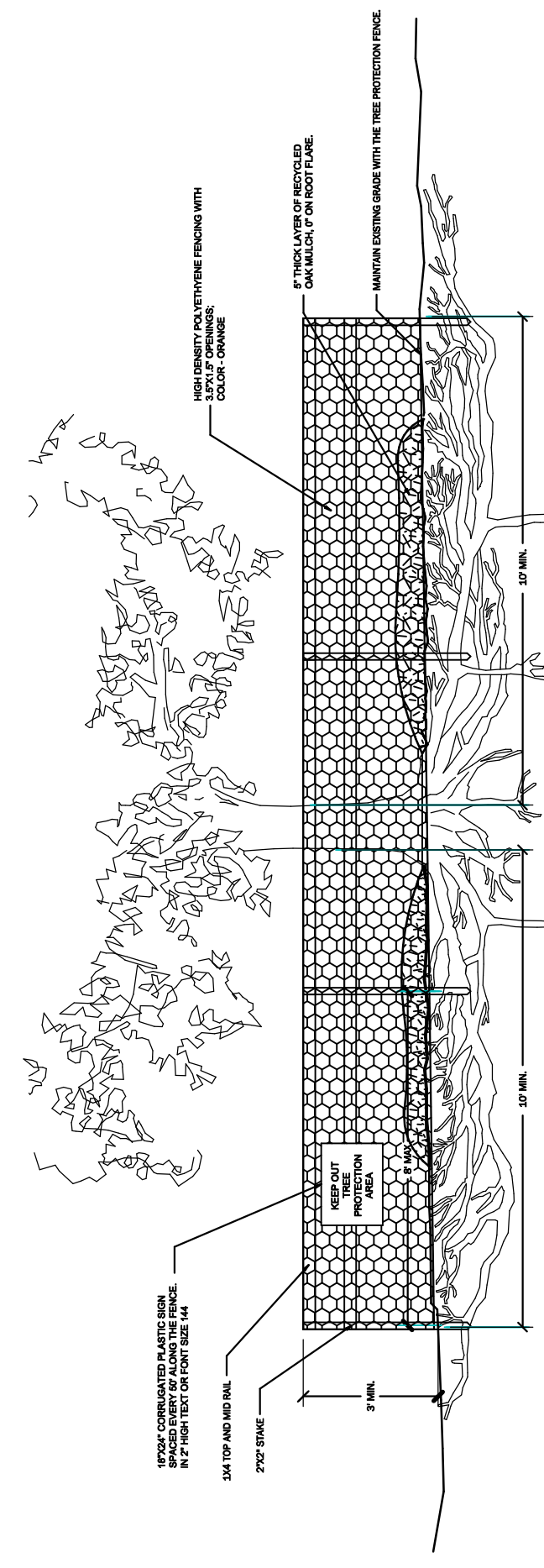
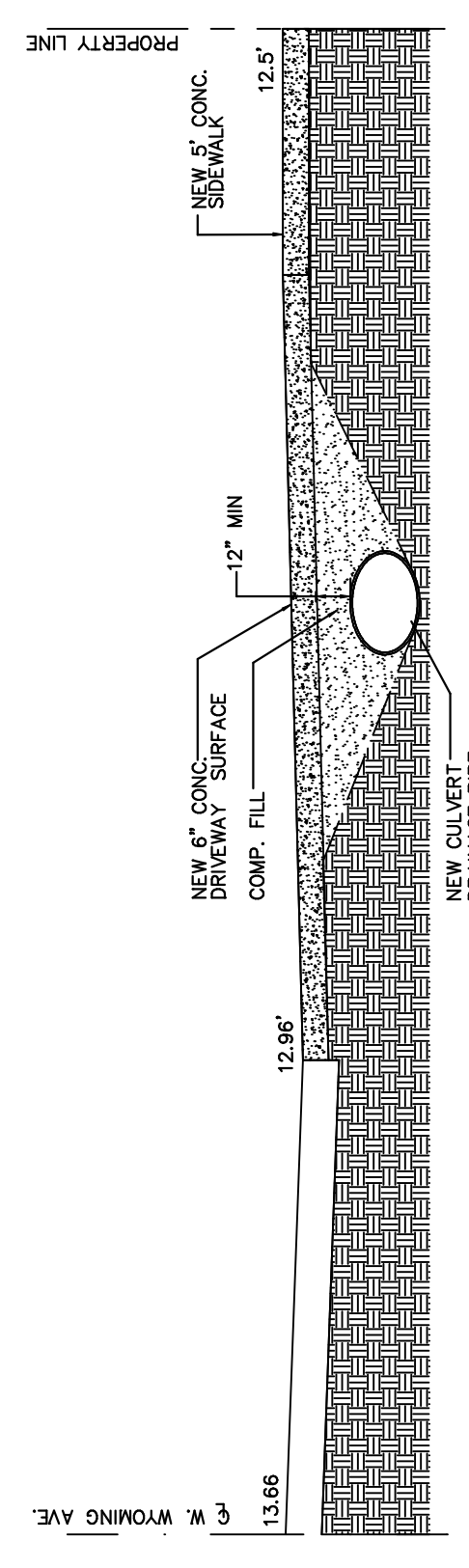
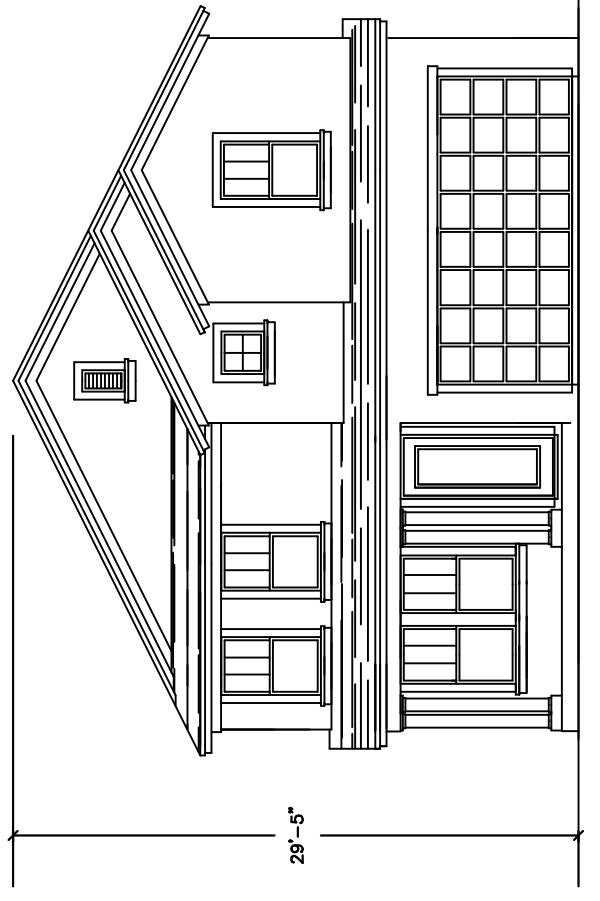


LEGEND:

- (P) PER RECORD PLAT
- (F) FIELD MEASUREMENT
- (S) SET CAPPED IRON ROD
- PSM PROFESSIONAL SURVEYOR & MAPPER
- ID IDENTIFICATION
- CONC CONCRETE PIPE
- LIGHT POLE
- OVERHEAD UTILITIES
- OAK TREE & DBH
- PALM TREE & DBH
- * TREE TO BE REMOVED

LEGAL DESCRIPTION:

LOT 4, BLOCK 21, INTERVA, ACCORDING TO THE PLAT THEREAS AS RECORDED IN PLAT BOOK PAGE 108 OF RECORD OF PLATS IN SPANISH BISHOP COUNTY, FLORIDA, TOGETHER WITH THE NORTH 1/2 OF ALLEY ABUTTING ON THE SOUTH.



THOMAS J. MONAWECK
 P.S.M., #5332
 NOT VALID WITHOUT THE SIGNATURE AND THE ORIGINAL RAISED SEAL OF A FLORIDA LICENSED SURVEYOR AND MAPPER

Boundary • Topographic • Environmental • Record • Mortgage • ALTA/ASCM Land Title